

# Overview of New York City Parent Involvement Structures

---



Office for Family Engagement and Advocacy

A solid green horizontal bar with a diagonal cut on the left side, extending across the bottom of the slide.

# Introduction

- In order to provide ongoing professional development to the Borough Directors, District Family Advocates, Parent Coordinators and Empowerment Schools Network Teams and other Department of Education staff, the Office for Family Engagement and Advocacy (OFEA) has developed this presentation to provide an overview of the current parent involvement structures that exist in our city.
- These structures, many of which have been created in response to specific requirements under State and Federal laws to ensure meaningful parent consultation and participation in the decision-making process occurs at every possible level of our system (school, district, borough and central) and serve as the vehicle by which the collective parent voice can be heard.

# Structures for Parent Involvement and Consultation At Every Level of the Public School System

## School Level:

- Parent Associations/Parent-Teacher Associations (PA/PTAs)
- School Leadership Teams (SLTs)
- Title I Parent Advisory Councils (Title I PACs)

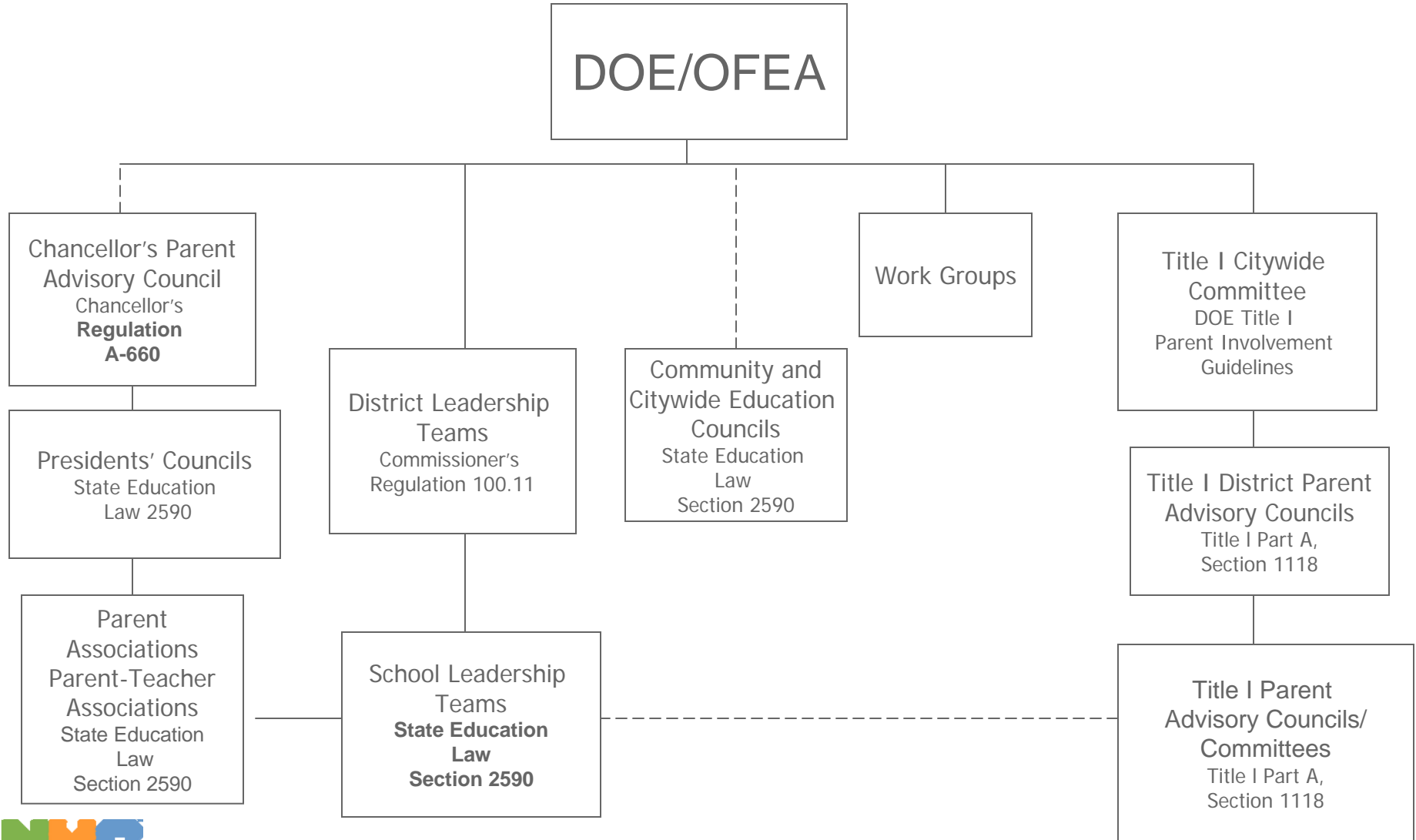
## District/Borough Level:

- Presidents' Councils (PCs)
- Borough High School Councils
- District Leadership Teams (DLTs)
- Title I District Parent Advisory Councils (Title I DPACs)
- Community and Citywide Education Councils

## Central Level:

- Chancellor's Parent Advisory Council (CPAC)
- Title I Citywide Parent Committee

# NYC Parent Involvement Structures at a Glance



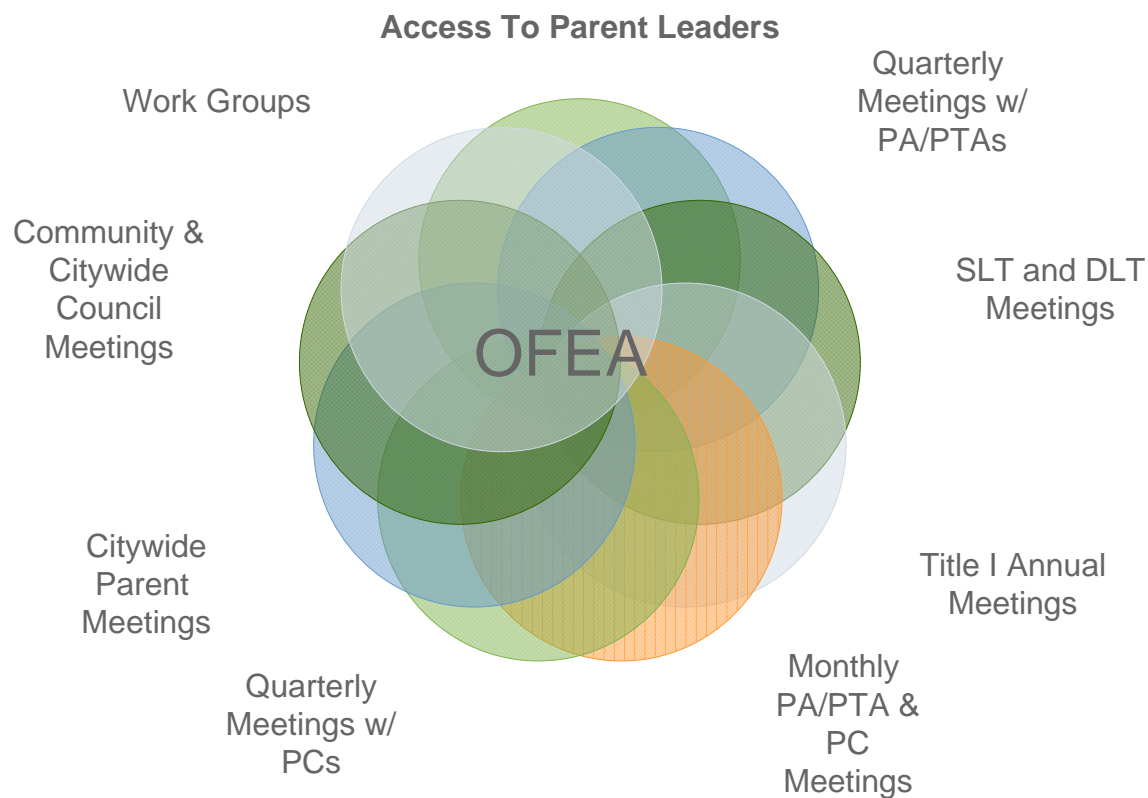
# Defining the term “Parent”

The definition for the term “parent” is found in Chancellor’s Regulation A-660 (CR A-660) and appears below:

- parents (by birth, adoption and/or step-parents)
- legally appointed guardians
- foster parents; and
- \*person in parental relation to a child or children currently attending a school

\*Note that the definition for this category can be found in CR A-660

# Consultation and Timely Information Sharing w/Parent Involvement Structures



## Parent Voice at the School Level: Parent Associations/ Parent-Teacher Associations, School Leadership Teams and Title I Parent Advisory Councils

### Parent Associations/Parent-Teacher Associations (PA/PTAs):

- Fundamental parent involvement structure in each school
- Develop bylaws guided by Chancellor's Regulation A-660
- School based decision making process (i.e., elect PA/PTA officers, elect parent members to serve on school leadership teams, develop their own budget; raise funds to support the organization and the school community)
- Mandatory officers play an integral role in the selection process for parent members to the Community and Citywide Education Councils

## Parent Voice at the School Level: Parent Associations/ Parent-Teacher Associations, School Leadership Teams and Title I Parent Advisory Councils

### School Leadership Teams (SLTs):

- PA/PTA President or designated Co-President as mandatory member
- fifty-percent (50%) of the team membership
- play significant advisory role regarding the development and review of the school's Comprehensive Education Plan (CEP) and the alignment of the school-based budget to the CEP
- participation on C-30 Level I Committees

## Parent Voice at the School Level: Parent Associations/ Parent-Teacher Associations, School Leadership Teams and Title I Parent Advisory Councils

### Title I Parent Advisory Councils or Committees (Title I PACs):

- provide representation for parents and children regarding Title I related issues
- mandatory advisory role with school administration regarding the planning, development, implementation and evaluation of Title I programs and the spending of Title I funds
- develop the proposed budget for use of the parent involvement allocation (no less than 1%)
- assist in development and/or review of the school parent involvement policy and school-parent compact

## Parent Voice at District/Borough Level: Presidents' Councils, District Leadership Teams, District Parent Advisory Councils and Community and Citywide Education Councils

### District/Borough High School Presidents' Councils:

- develop bylaws guided by Chancellor's Regulation A-660 (CR A-660)
- provide representation for local parent associations/parent-teacher associations (i.e., school based decision making process (i.e., elect Presidents' Council officers, select parent members to serve on district leadership teams, develop budget; raise funds to support the organization)
- provide technical assistance, training and guidance to PA/PTAs to ensure compliance with bylaws and CR A-660
- send representatives to serve on Chancellor's Parent Advisory Council (CPAC)

## Parent Voice at District/Borough Level: Presidents' Councils, District Leadership Teams, District Parent Advisory Councils and Community and Citywide Education Councils

### District Leadership Teams (DLTs):

- includes up to five District/Borough parent leaders (including Presidents' Councils and Title I DPAC) representation
- provide recommendations to the Community and Borough Superintendents regarding development and review of the District's Comprehensive Education Plan (DCEP)
- provide support and technical assistance to the SLTs in the respective districts/regions

## Parent Voice at the District/Borough Level: Presidents' Councils, District Leadership Teams, District Parent Advisory Councils and Community and Citywide Education Councils

### District Parent Advisory Councils (DPACs):

- provide representation for local parent advisory councils/committees regarding Title I related issues at the district level
- offer significant advisory role and provide recommendations to the Community and Borough Superintendents regarding development and review of the District's Comprehensive Education Plan (DCEP)
- offer significant advisory role in the development of the District Parent Involvement Policy (DPIP)
- send representatives and alternates to participate on the Title I Citywide Parent Committee

## Parent Voice at the District/Borough Level: Presidents' Councils, District Leadership Teams, District Parent Advisory Councils and Community and Citywide Education Council

### Community Education Councils (CECs):

- Evaluate the Community Superintendent
- Approve zoning lines for community school district schools, as submitted by superintendent and consistent with the Chancellor's Regulations
- Promote achievement of educational standards and objectives
- Review the district's educational programs and assess their impact on student achievement
- Provide input to the chancellor and the city board on matters of concern to the district
- Participate in training and education programs
- Serve as liaison with School Leadership Teams (SLTs)
- Meet with PA/PTA officers at least quarterly
- Submit comments on capital plan
- Hold public hearings on the district's annual capacity plans

## Parent Voice at the District/Borough Level: Presidents' Councils, District Leadership Teams, District Parent Advisory Councils and Community and Citywide Education Councils

### Citywide Council for Special Education (CCSE)

- Advise and comment on educational or instructional policy involving special education services and establishment of Committees on Special Education (CSEs) in the districts
- Issue an annual report on the effectiveness of the school district in providing special education services, making recommendations on improvement
- Hold at least one meeting per month where the public can discuss issues facing students with disabilities

## **Parent Voice at the District/Borough Level: Presidents' Councils, District Leadership Teams, District Parent Advisory Councils and Community and Citywide Education Councils**

### **Citywide Council for High Schools (CCHS):**

- Advise and comment on educational or instructional policy involving high schools
- Issue an annual report on the effectiveness of high school education in the school district, make recommendations for improvement
- Hold at least one meeting per month where the public can discuss issues related to high school education

## Central/Citywide Level: Chancellor's Parent Advisory Council and Title I Citywide Parent Advisory Council

### Chancellor's Parent Advisory Council (CPAC):

- provide representation for local District/Region Presidents' Councils at the central/citywide level and consult with district/borough councils to identify concerns, trends and policy related issues and communicate them at the central level
- provide technical assistance and guidance to presidents' councils to ensure compliance with CR A-660
- provide technical assistance and guidance to parent associations and presidents' councils/borough high school councils

## Central/Citywide Level: Chancellor's Parent Advisory Council and Title I Citywide Parent Advisory Council

### Title I Citywide Parent Committee:

- provide representation for local district parent advisory councils and/or district presidents' councils regarding Title I issues at the central/citywide level
- consult with district parent advisory councils and/or district presidents' councils to identify concerns, trends and policy related issues and communicate them at the central level
- provide technical assistance, training and guidance to district/school parent advisory councils to ensure compliance with Title I city, state and federal guidelines

# Other Summer/Saturday Parent Academy (SPA) Courses

- Roles and Responsibilities of Parent and Parent-Teacher Associations
- Role of Presidents' and Borough High School Councils
- Role of Community and Citywide Education Councils
- Fiscal Management and Responsibilities
- Recordkeeping
- Overview of Title I Parent Involvement Requirements
- Writing and Revising Bylaws
- Budget Planning
- Team and Capacity Building
- Effective Leadership and Outreach
- Sharpening Your Advocacy Skills

# Resources

- Borough Directors
- District Family Advocates
- Parent Coordinators
- School District Improvement Liaisons
- New York State Education Department (NYSED)
- New York City Regional School Support Center
- Office for Family Engagement and Advocacy (OFEA)

# Additional Resources

<http://schools.nyc.gov/Offices/OFEA/default.htm>

<http://www.nysed.gov/>